

Best Practices for Trial Work

Back to Basics

Mona Henderson

Bleaching Committee Meeting Spring 2019

“Learning opportunities”

Defining the trial plan too late, thus compromising support from operations and not fully aligning with production needs.

Going into a trial without having a good sample points/valves id'd.

Mill did not support with supplementary data after trial was completed.

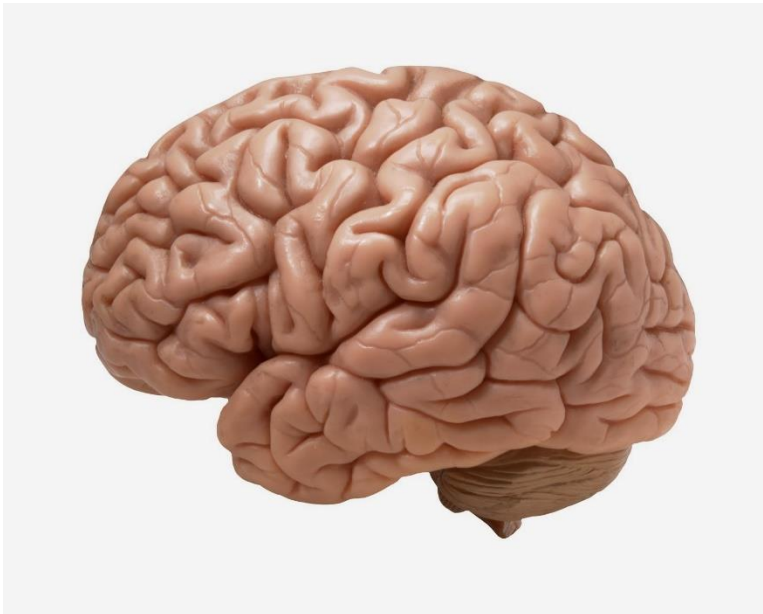
No “vested” interest from designated liason.

Due to unexpected shutdown and instabilities, sampling had to be done at reduced rate. Results not representative of current rate.

Too much data collected, making timely analysis difficult.

Trials took longer than planned and had to be abbreviated.

Back To Basics



Specific
Measurable
Achievable
Relevant
Timely

Be Specific!

WHY are you doing the trial
= Ultimate Goal

WHAT measurements do you need to
support this goal

WHEN do you need the results

WHERE should the data be collected

WHO should participate and support

?



Measurements and data collection

What information is needed?

How will you ensure accuracy?

What is the sampling plan and where are the collection points?

Is it possible to collect all samples safely?

Can the lab handle all the samples before they deteriorate?

Are the samples redundant; does each sample serve a purpose?



Are the desired outcomes Achievable?

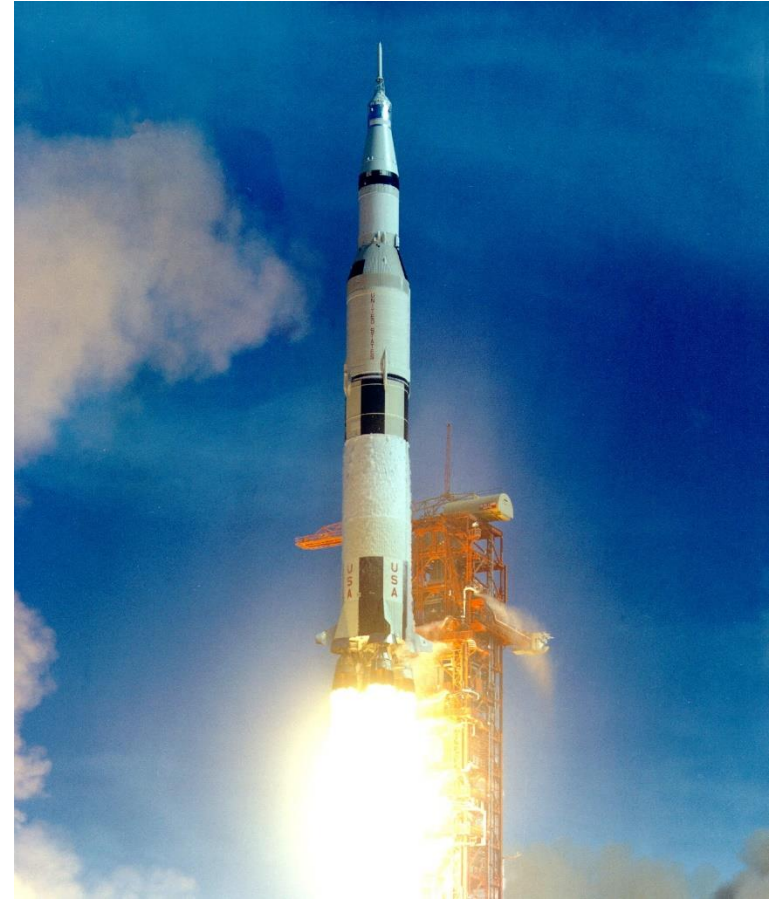
Consider time, money, and resources

What factors don't you have control over?

What other inputs and support are needed?

>> Does the ultimate goal need to be redefined?

>> Is the trial plan too ambitious?



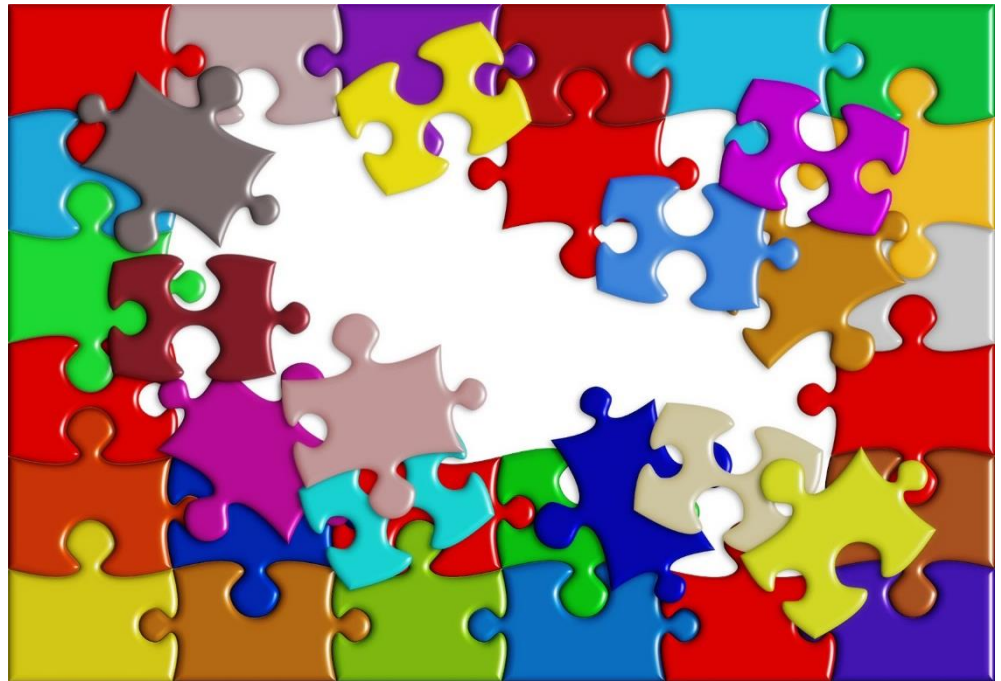
Is the trial Relevant?

HOW does the trial support the ultimate Goal?

Will the data support the Goal?

>> system stability
>> production rate
etc.

Make sure that the trial
doesn't take on a life
of its own!



Timeliness?

What is the time frame of the trial?

When is the final report needed?

What is the sample frequency?

Consider:

Retention times

Shift changes

Unexpected down time

Instabilities

Time to process samples



>> Trials and reporting often takes (much) longer anticipated

Back to Basics

Be SMART about the planning and execution.

Follow the KISS principle!

Allow for more time than anticipated.