



Recycling D
Filtrate to the
Sawdust
Bleach Feed
Repulper

David Trzil
Clearwater
Paper

Social Responsibility Goals

By 2017, we will:

20% ↓

Reduce water consumption

15% ↓

Reduce energy consumption

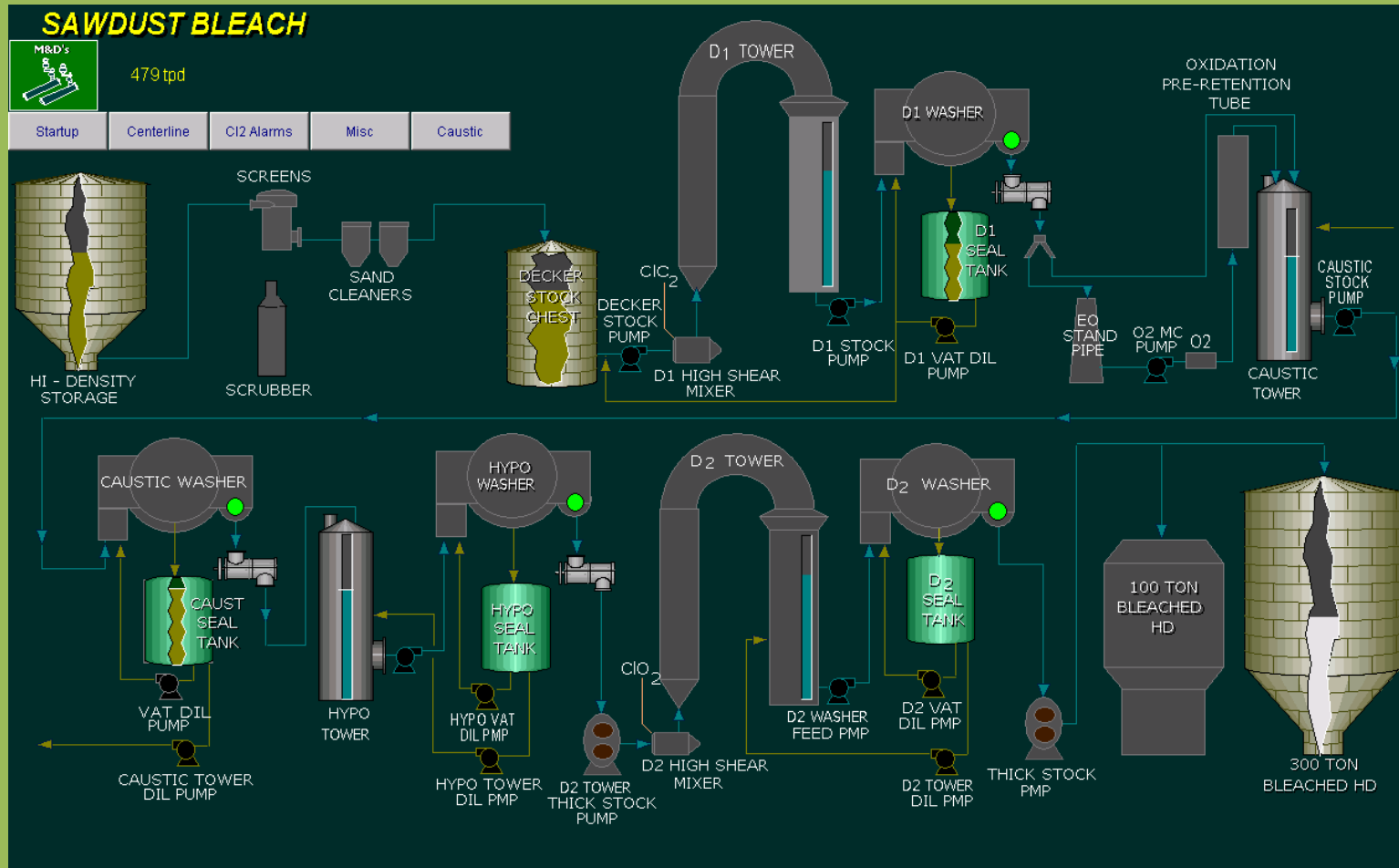
15% ↓

Reduce greenhouse gas emissions

20% ↓

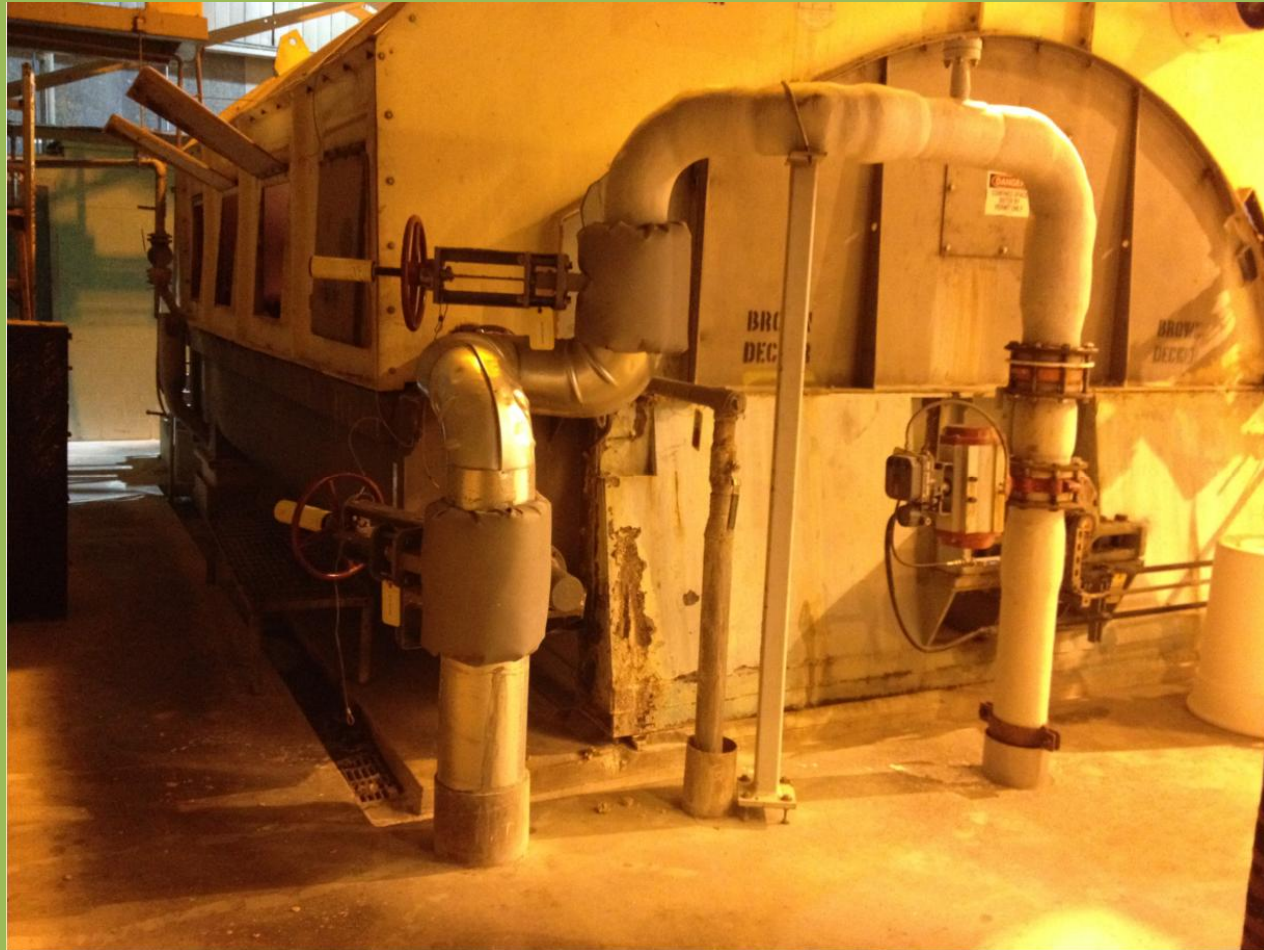
Reduce manufacturing solid waste to landfills

Sawdust Bleach DEpoWpD

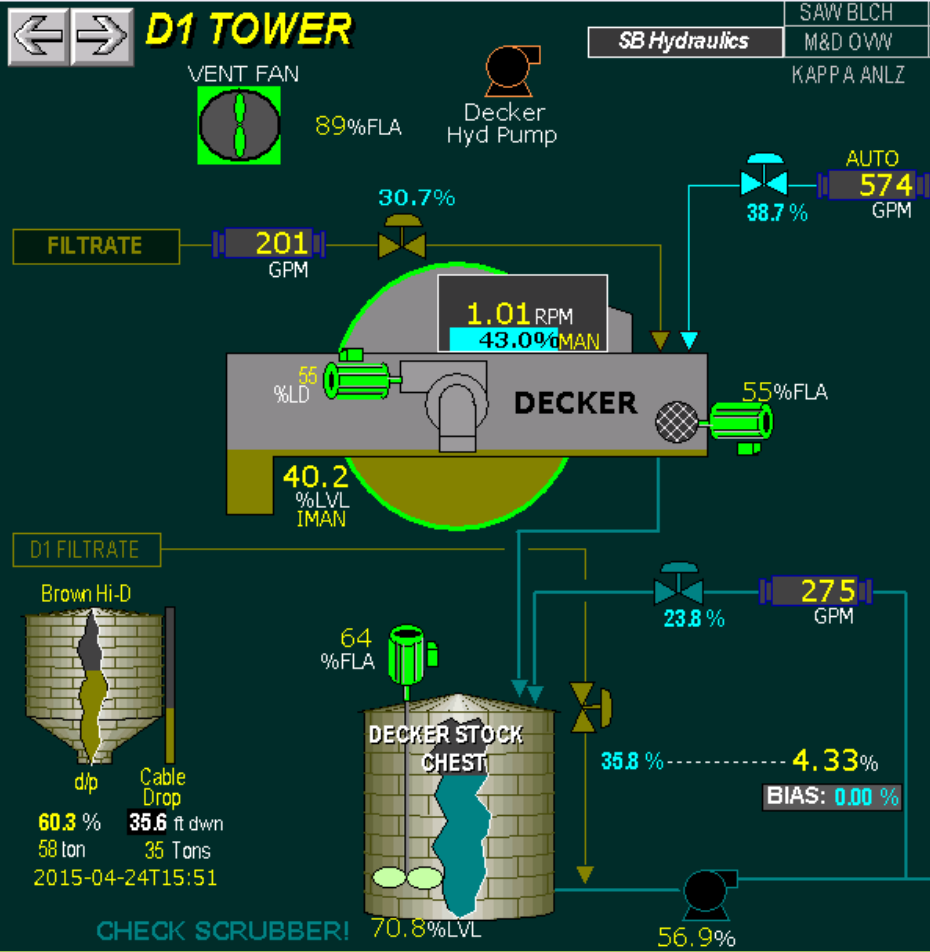


Note: Hypo is just the equipment name. No sodium hypochlorite is used to bleach.

Decker (but really a Washer!)



Decker Repulper



Benefits and Challenges

- Hot Water Reduction (Sustainability)
- Energy Savings (Sustainability)
- Acidic Filtrate Neutralizes Carryover
- Some Odor Noticeable from Decker Chest at Higher Replacement – Over Bleaching Signal!