

An Alternative to Tile Lining of a D100 Washer Vat



October 7, 2014
PAPTAC Bleaching Committee Meeting
Kimberley, BC

Intercon Pulpmill

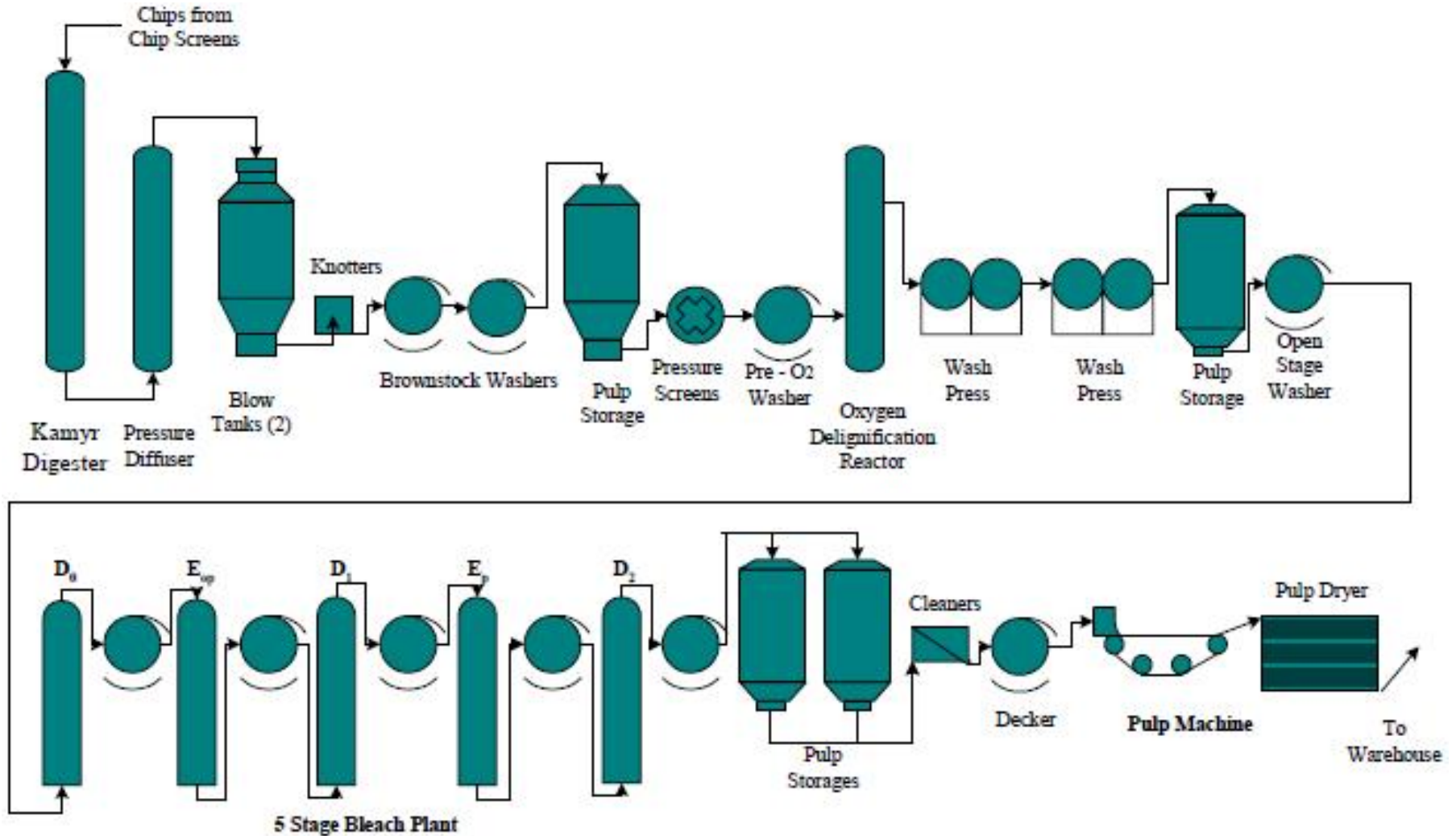


Intercon:

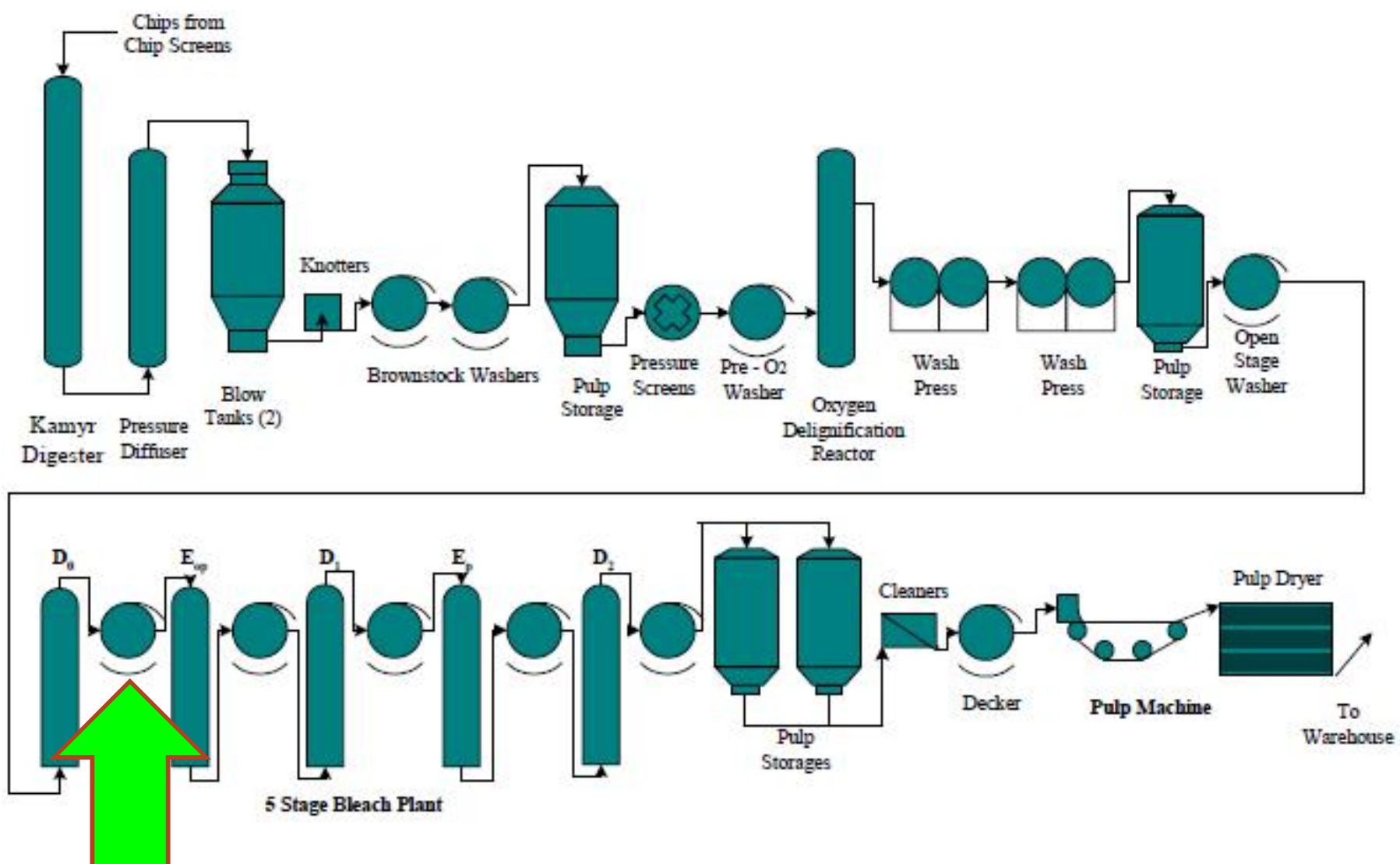
- Located in Prince George, BC
- 1968 – Mill operation started
- Original design – 540 ADt/d
- Current production rate – 900 ADt/d NBSK
- 5-stage bleach plant sequence is DEopDEpD
- Bleach inter-stage washing – GL&V drum washers



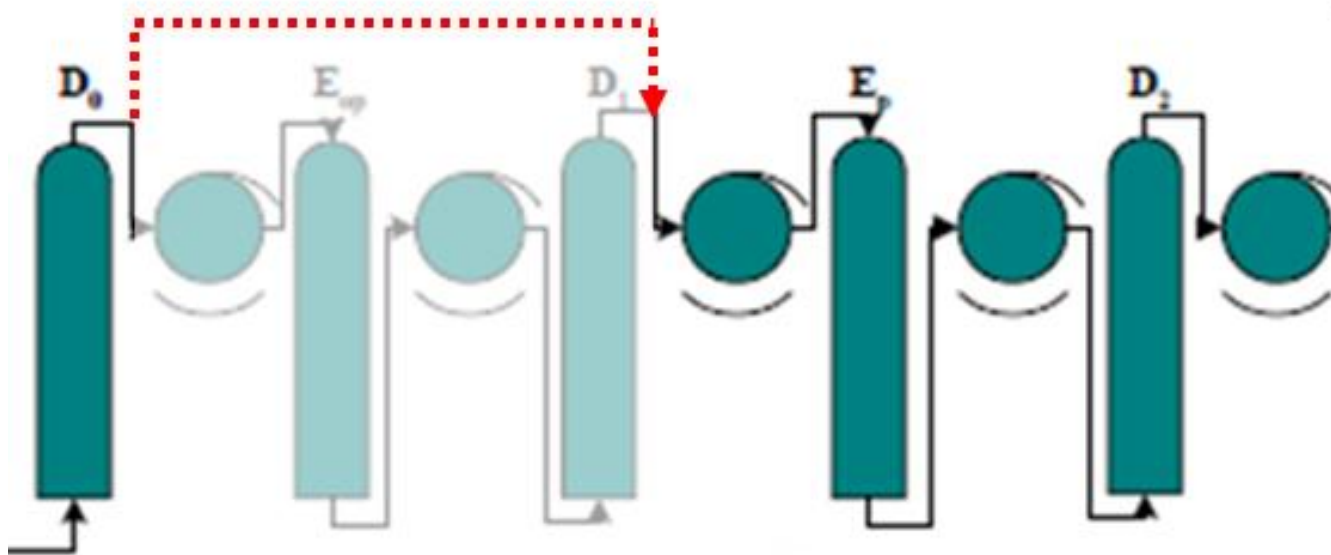
Intercon Fibreline

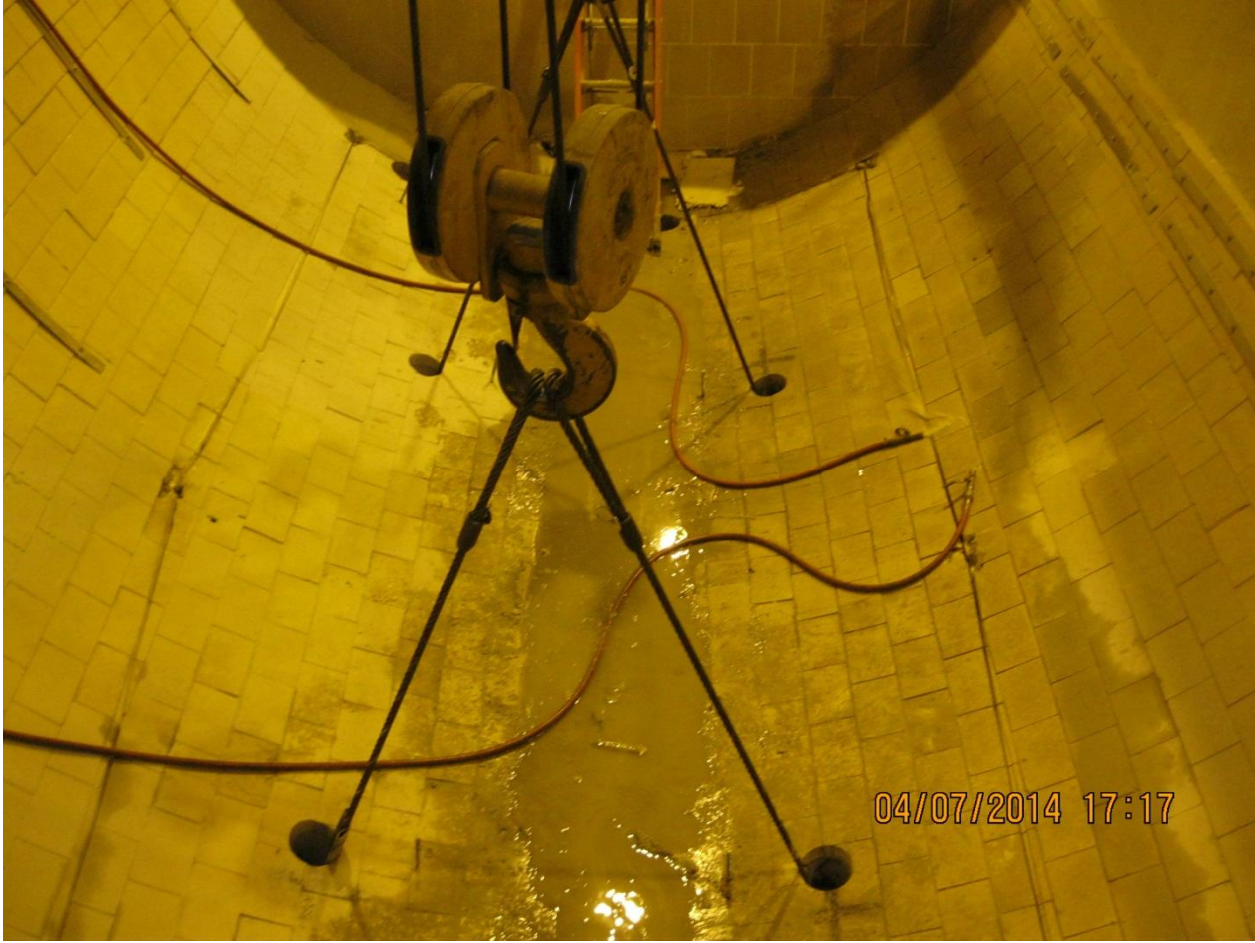


Intercon Fibreline



- D100 washer vat identified for repair in concrete restoration program
- Work scheduled for April 2014 prior to major turn-around
- Two bleaching stages bypassed to allow work during regular production















- Vat removal
- Found work
 - Damaged brick of vat, repulper and end walls
- Major turn-around approaching
 - Resources committed to TA work

An alternative required to complete project & found work without negatively impacting upcoming major turn-around

- Grind & point inlet vat & repulper
- In place of brick & tile, coat vat with TL-220
- TL-220 – Flake glass vinyl ester membrane liner
- Formulation suited for chlorine dioxide bleaching
- TL-220 was successfully used for a repair to the #1 washer in the past
- Titanium washers embedded in high erosion areas of vat to help identify wear
- Washer vat scheduled for inspection during 2016 TA to assess membrane liner



